

24"W Self-Contained Back Bar Refrigeration

Refrigeration



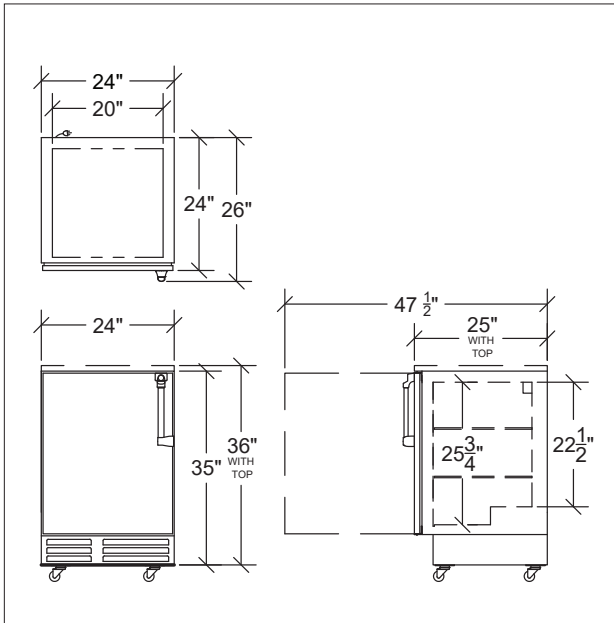
BS24-KSS-R

Model

Model	Length	Doors	Weight	Amps	HP
BS24	24"	1-Door	224 lbs.	1.7	1/5

Case Capacity

Type	BS24 (24")
Long Neck Bottles	4.66 cases
12 oz Cans	7.75 cases
Wine Bottles (ea)	48 bottles



Standard Features

- 35"H without top, 36"H with 1" optional stainless steel top
- 24" front to back depth , 25" with stainless steel top
- Coved corner stainless steel interior
- Heavy duty self-closing 24"W doors
- Stainless steel door handles with built-in locks
- Digital thermostat
- Built-in cool white LED lighting (7000K)
- DynamicChill 360° Technology
- Heated mullion to minimize condensation
- Approved for NSF 7 open food storage
- Pre-drilled bottom for optional legs or casters (uses 1/4-20 self tapping 1/2"L screw)
- Eco-friendly refrigerant and insulation
- 5-year compressor, 1-year parts & labor warranty

Specifications

- 115 V, 1 Phase, 60 Hz
- Furnished with 6'-0" plug-in cord, which exits left or right rear of cooler
- NEMA 5-15P plug configuration
- Dedicated 15 amp circuit recommended
- 1.7 amps, 1/5 HP
- R290 hydrocarbon refrigerant
- 30°F - 40°F operating range
- No drain required
- Condensate evaporator pan included
- 2" thick foamed-in-place polyurethane
- 20 gauge stainless steel walls with coved corners
- NSF epoxy coated durable shelves - one bottom and two adjustable shelves per door
- Sides & Front: 20 gauge stainless steel
- Back: 20 gauge galvanized steel
- Top: 20 gauge galvanized steel with option of 1" stainless steel top
- Self-closing 24"W doors available in black vinyl, stainless steel, glass with black vinyl, or glass with stainless steel
- 19-3/4"W x 29-11/16"H door opening

WINE TEMPERATURE CONTROL

Model	Description
BS-201	White Wine, 50°F-55°F
BS-202	Red Wine, 60°F-65°F



This equipment is intended for the storage and display of non-potentially hazardous bottle or canned products only. This equipment is intended for use in an area where the ambient temperature typically does not exceed 75 °F.

