

Low Profile Refrigeration

Refrigeration



LS60-SSS-LR

Standard Features

- 29" High without Top, 30" High with 1" Optional Top
- 24" Front to Back Depth (25" with Top)
- Coved corner stainless steel interior
- Heavy duty self-closing 24"W doors (LS36, LS60, LS84, and LS108) and 16"W doors (LS52 and LS72)
- Stainless steel door handles with built-in locks
- Digital thermostat
- Built-in Cool White LED Lighting (7000K)
- DynamicChill 360° Technology
- Includes condensate evaporator pan
- Durable shelves, one floor rack and one adjustable shelf per door
- Approved for NSF 7 Open Food Storage
- Eco-friendly Refrigerant and Insulation
- 5-Year Compressor Warranty
- 1-Year Parts & Labor Warranty

Models

Model	Length	Doors	HP
LS36	36"	1-Door	1/5
LS52	52"	2-Door	1/4
LS60	60"	2-Door	1/4
LS72	72"	3-Door	1/4
LS84	84"	3-Door	1/3
LS108	108"	4-Door	1/3

Specifications

- 115 V, 1 Phase, 60 Hz
 - Furnished with 8'-0" plug-in cord, which exits left or right rear of cooler
 - NEMA 5-15P plug configuration
 - Dedicated 15 amp circuit recommended
- Electrical**
- 1 Door Units (36"): 1.7 amps, 1/5 HP compressor
 - 2 Door Units (52" & 60"): 2.2 amps, 1/4 HP compressor
 - 3 Door Units (72"): 2.2 amps, 1/4 HP compressor
 - 3 Door Units (84"): 2.7 amps, 1/3 HP compressor
 - 4 Door Units (108"): 2.8 amps, 1/3 HP compressor
- Refrigeration**
- R290 Hydrocarbon Refrigerant
 - 30°F - 40°F operating range
 - Digital thermostat on front grille
- Plumbing**
- No drain required
 - Condensate evaporator pan included
- Insulation**
- 2" thick foamed-in-place polyurethane
- Interior**
- 20 gauge stainless steel walls with coved corners
 - NSF epoxy coated durable shelves - one bottom and two adjustable shelves per door
- Exterior**
- Sides: 20 gauge stainless steel
 - Front: 20 gauge stainless steel
 - Back: 20 gauge galvanized steel
 - Top: 20 gauge galvanized steel with option of 1" stainless steel top
- Doors**
- Self-closing 24"W doors available in black vinyl, stainless steel, glass with black vinyl, or glass with stainless steel
 - 19-3/4"W x 24-11/16"H door opening
 - 15-3/4"W x 24-11/16"H door opening (LS52 & LS72)



This equipment is intended for the storage and display of non-potentially hazardous bottle or canned products only.

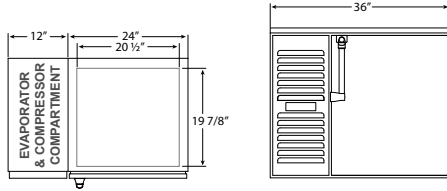
This equipment is intended for use in an area where the ambient temperature typically does not exceed 75 °F.

Low Profile Refrigeration

Refrigeration

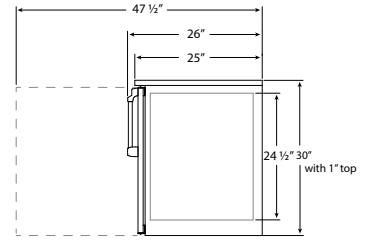
One Door (36")

Models beginning LS36



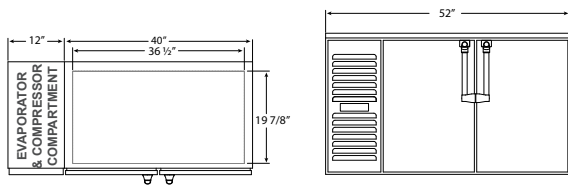
Standard Door Side View

Applies to all Models



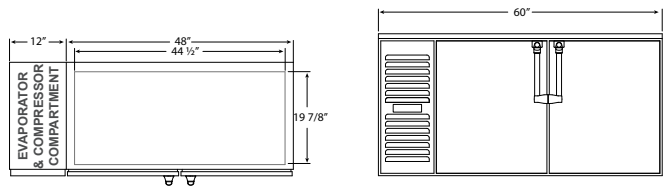
Two Narrow Doors (52")

Models beginning LS52



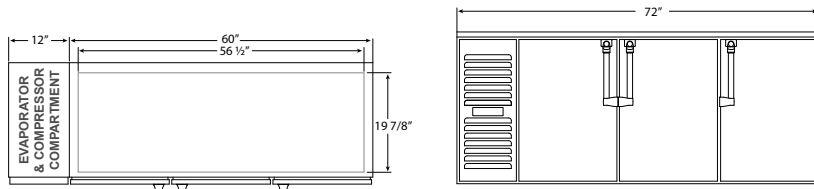
Two Doors (60")

Models beginning LS60



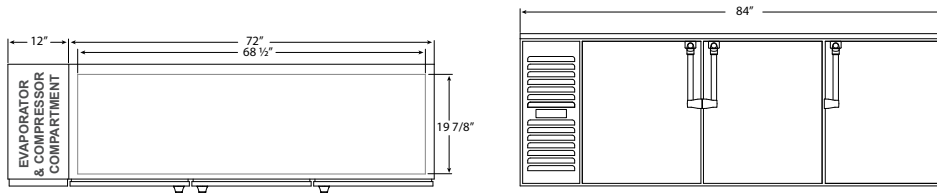
Three Narrow Doors (72")

Models beginning NS72



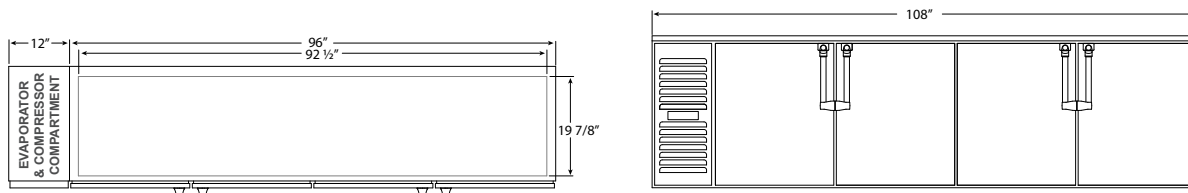
Three Doors (84")

Models beginning NS84



Four Doors (108")

Models beginning NS108



Note: Optional casters raise height 1" higher than wheel size & optional 4" or 6" legs available