



Easybar®

LIQUOR DISPENSING EQUIPMENT

SETTING THE BAR SINCE 1968

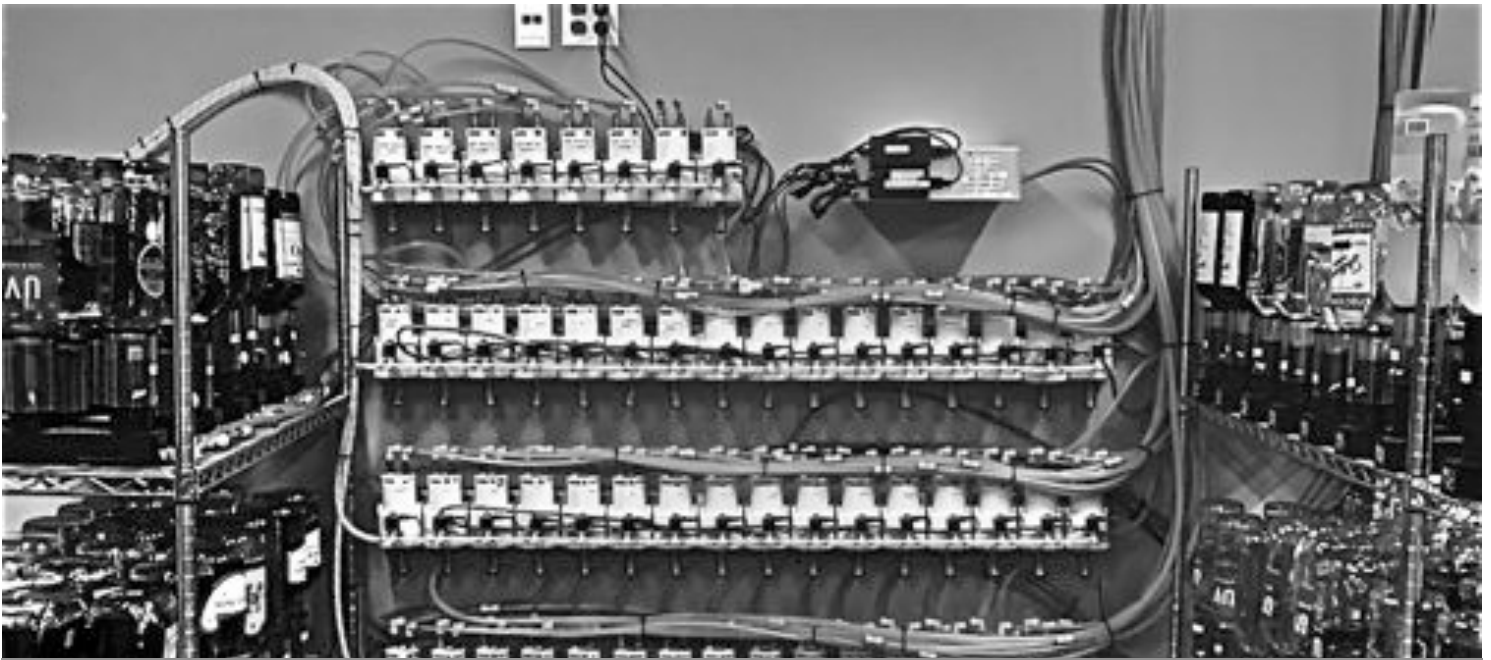
EASYBAR LIQUOR DISPENSING SYSTEMS

FOR OVER 40 YEARS EASYBAR HAS BEEN THE INDUSTRY LEADER IN DESIGN, MANUFACTURING, SERVICE, AND INSTALLATION OF COMMERCIAL BEVERAGE DISPENSING EQUIPMENT. OUR BEVERAGE SYSTEMS PROVIDE CONSISTENCY, ACCURACY, SPEED, AND ACCOUNTABILITY FOR EVERY PRODUCT THAT IS DISPENSED. WE UNDERSTAND THAT EVERY CLIENT'S NEEDS DIFFER AND THIS HAS PUSHED OUR INNOVATION AND DEVELOPMENT OF NEW EQUIPMENT AS WELL AS EXISTING PRODUCTS. WITH EASYBAR YOU CAN REST ASSURED THAT YOU ARE RECEIVING THE MOST ADVANCED AND TRUSTED EQUIPMENT AVAILABLE AT THE MOST REASONABLE PRICES ON THE MARKET. FOR THESE REASONS EASYBAR CUSTOMERS INCLUDE THE MOST HIGHLY RESPECTED NAMES IN THE HOSPITALITY INDUSTRY. CONTACT US TODAY AND DISCOVER THE EASYBAR ADVANTAGE FOR YOURSELF.

**EST. 1968
MADE IN THE USA**

**19799 SW 95TH AVE SUITE A TUALATIN, OR 97062
PH: 503.624.6744 | FAX: 503.624.6741
EMAIL:INFO@EASYBAR.COM**

WWW.EASYBAR.COM



“ I couldn't be happier with the Easybar system. After looking at all of the different options that are available on the market, Easybar offered the most comprehensive solution. The turnkey ease of use for this system can't be matched. The system installers and the sales people were all extremely helpful and knowledgeable about the product and the industry. Our system has more than paid for itself already and we are still in our first year. When it comes to solid beverage cost control, this is the answer.”

Mike Camire, CFBE, FMP Director of Food & Beverage Hollywood Slots Hotel & Raceway

CLCS II FULLY COMPUTERIZED BEVERAGE DISPENSING SYSTEM

Dispense and control up to 128 brands of liquor plus cocktails from any combination of guns and / or towers at any number of bartender stations. Up to five ingredients can be simultaneously dispensed by the press of a single button. CLCS can incorporate controls for liquor dispensed directly from the bottle as well as soda, juice, beer or wine.

Easybar systems prevent unauthorized access to liquor. Installations are tailored for existing space requirements. Our positive-displacement pumps never allow air to touch the product and prevent runaway dispense in the case of leak. Any required bottle reserve is possible with our connectable single- to four-bottle manifolds ensuring every bottle is completely emptied. Easybar CLCSII-T Liquor Systems are certified by NSF International.



EASYBAR CLCSII-T LIQUOR SYSTEMS ARE
CERTIFIED BY NSF INTERNATIONAL

CONTROLS POUR SIZES
INCREASES BARTENDER SPEED
ENSURES PERFECTLY PORTIONED DRINKS
PREVENTS PRODUCT LOSS
ACCOUNTS FOR ALL BEVERAGES
SAVES MONEY

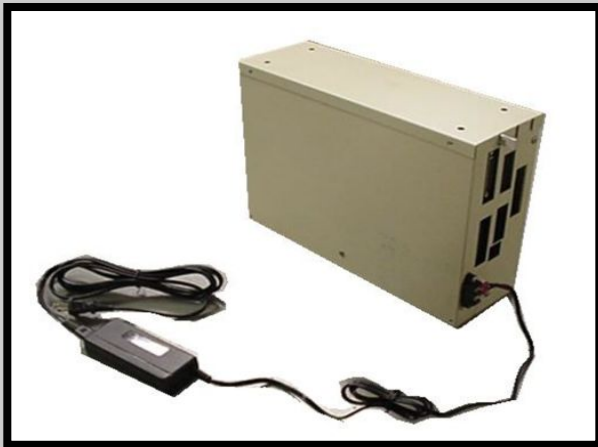
Easybar gun systems are the preferred choice for large casino, nightclub, and entertainment venues worldwide. By controlling your product and protecting your liquor investment you will be in a position to watch pour costs drop and profits rise. Contact Easybar and start saving today.



GUN STATION COMPONENTS

Dispensing Guns

- Gun Boxes are available in single, dual, triple, or quad configuration
- Each gun dispenses up to twenty four brands and twenty four cocktails of up to five ingredients
- Each brand and cocktail has up to three pour sizes
- Guns are equipped with diffuser nozzles to prevent splashing and are individually labeled for easy identification
- Easybar offers the only liquor system that can combine liquor guns, self serve cocktail towers, controlled bottle pour spouts, and draft beer in a single unified system



Point of Dispense Electronics (POD)

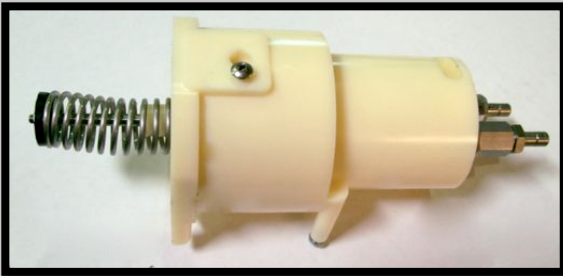
- POD contains electronics that control the dispensing station
- Located within 15' of the dispensing gun or tower
- Regular POD can accommodate up to 64 brands, Large POD can accommodate up to 128 brands
- Auxiliary switch packs can be added to track items (like bottled beer) that are not dispensed from the systems
- Capable of interfacing to POS with optional universal interface card

Solenoid Rails

- 16 Solenoids per rail
- Programmed to work in conjunction with pumps in back room to ensure accuracy
- Located at dispensing station to minimize dripping



PUMP ROOM COMPONENTS



Positive Displacement Liquor Pumps

- Hydrator piston pumps do not allow air to directly touch the product so beverage taste is never compromised
- Positive displacement pumps reset fully before dispensing a second drink, making them the most accurate pump on the market
- Easybar pumps remain closed until signaled to pour - in the event of a leak no liquor reserve is lost.
- Standard pump rail includes 16 pumps



Manifolds

- Two to four bottle configuration
- Bottles empty sequentially for easy restocking
- Manifolds are connectable for any required bottle reserve
- Quick disconnect fittings on manifolds mean reconfiguring bottle reserve is quick and Easybar bottle stoppers fit inside the bottleneck to prevent spillage when inverting or removing bottles
- No air touches the liquid from the time the bottle is inverted into the manifold until it is dispensed from the tower or gun ensuring quality of product
- Slanted manifold allows for complete drainage without removing plastic nozzle inserts



Communication Co-Processor (CCP)

- Located in pump room
- Controls all communication with computer and reporting features

Point-of-Pump Electronics (POP)

- Located in the pump room
- Contains electronics which control all dispensing
- Regular POP can accommodate up to 64 brands, Large POP can accommodate up to 128 brands



Storage Rack

- Wire shelving rack
- 600-800 lbs weight capacity
- Easily assembled, durable, sanitary
- 48"W x 18"D x 72"H standard unit

EASYBAR COMBOPOUR

Cocktail capability, small footprint, touch screen, multi-function liquor control.

- **RING POUR:**

Control pour sizes for drinks dispensed directly from the bottle.

- **FREEPOUR:**

Account for bartender freepour with radio frequency wireless transmission to your point-of-sale system or office computer.

- **COCKTAILS**

It automatically rings up and accounts for complete cocktails – not just individual shots!

PATENT PENDING



Your choice of pour spouts!

Freepour spouts are wireless with the look and feel of standard pour tops. The amount poured is measured and rung up when the bottle is turned upright.

Ring activated spouts completely seal the bottle they are placed on until their spring-loaded stopper is opened by the Combopour unit. The unit controls how long the spout is open, ensuring portion control as well as measurement. You can use either style spout individually or both at once.

Your choice of drinks!

Select one of up to 250 cocktails from the controller screen, and then pour the listed brands into a glass (up to 5 ingredients per cocktail). Free pour spouts let your bartenders pour just as they're used to while keeping track of the amount of liquor used. Ring spouts ensure a "to recipe" cocktail is poured every time as the system registers the cocktail to your POS.

Your choice for savings!

You decide which liquors, cocktails, and prices will be monitored. All pours and cancellations are time stamped and saved onto the on-board memory. This memory persists even after power loss, and can be read with the Easybar Combopour software suite. You can use this information for generating reports to keep track of sales, costs, and inventory usage. These units are designed to work either independently or in conjunction with an Easybar liquor gun.

HOW IT WORKS: FREE POUR

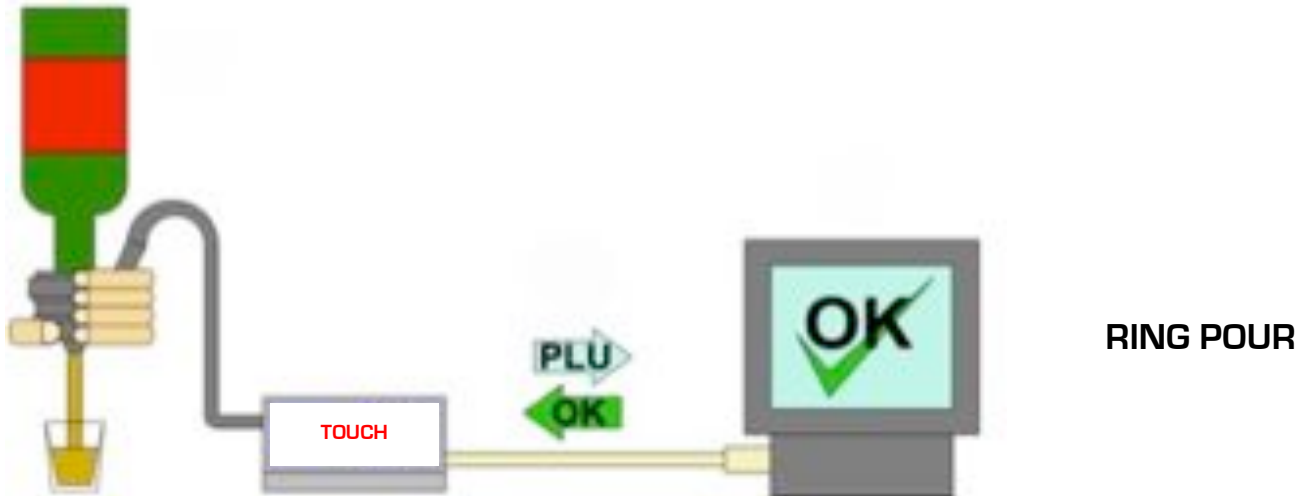
- The bartender pours drinks as normal, in up to four customizable sizes.
- When the bottle is returned upright a wireless signal is sent from the spout and picked up by the unit's antenna
- When the signal is received, the unit stores the time, type, and amount of what was poured, then sends a PLU corresponding to the poured drink to the POS
- The POS rings the drink up automatically on the current customer's tab, or opens a new tab. The drink is now stored in your POS report. The Combopour can also send you its own report for comparison.

HOW IT WORKS: RING POUR

- Bartender selects one of four programmable pour sizes, the first size is selected by default
- Ring is placed over the bottle, the unit reads the spout's ID tag to know what is being poured
- Bottle is inverted over the glass and the ring opens the spout for a time period calibrated to that specific liquor's thickness
- The unit stores the time, type, and amount of what was poured, then sends a PLU corresponding to the poured drink to the POS.

HOW IT WORKS: COCKTAILS

- Bartender presses "Cocktail" button to start the process.
- The screen asks the bartender to touch the first letter of the cocktail.
- The list of cocktails starting with that letter is then come up on the screen. Scroll through the list, when the cocktail shows on the screen, press the cocktail to pour
- Up to five ingredients will show on the screen, but you may start with any ingredient in the cocktail, displayed or not. As each ingredient is poured, it will be removed from the screen. When the last liquor is poured the cocktail will ring up on the POS. Free pour and Ring pour can be used in conjunction to pour cocktails.

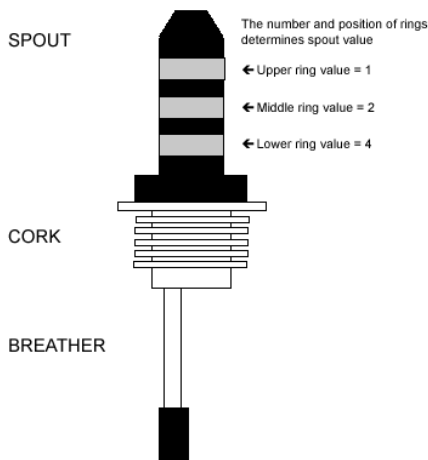


EASYBAR EASYTRACK-7 CONTROLLED SPOUT SYSTEM

The most affordable and user-friendly system available on the market! Easytrack-7 offers liquor tracking for up to 7 different price categories and three different pour sizes. Interface to your point of sale unit or cash register, and you have 100% accountability for only \$995.00!



- **FLEXIBILITY** - Track liquor poured directly from the bottle.
- **SPEED** - Easybar Easytrack-7 spouts dispense faster than competitive equipment.
- **PROTECTION** - Controlled pour spouts allow only preset portions to be dispensed and will not allow drinks to be dispensed without being recorded.
- **TOTAL CONTROL** - Use Easytrack-7 alone to track unlimited bottles!

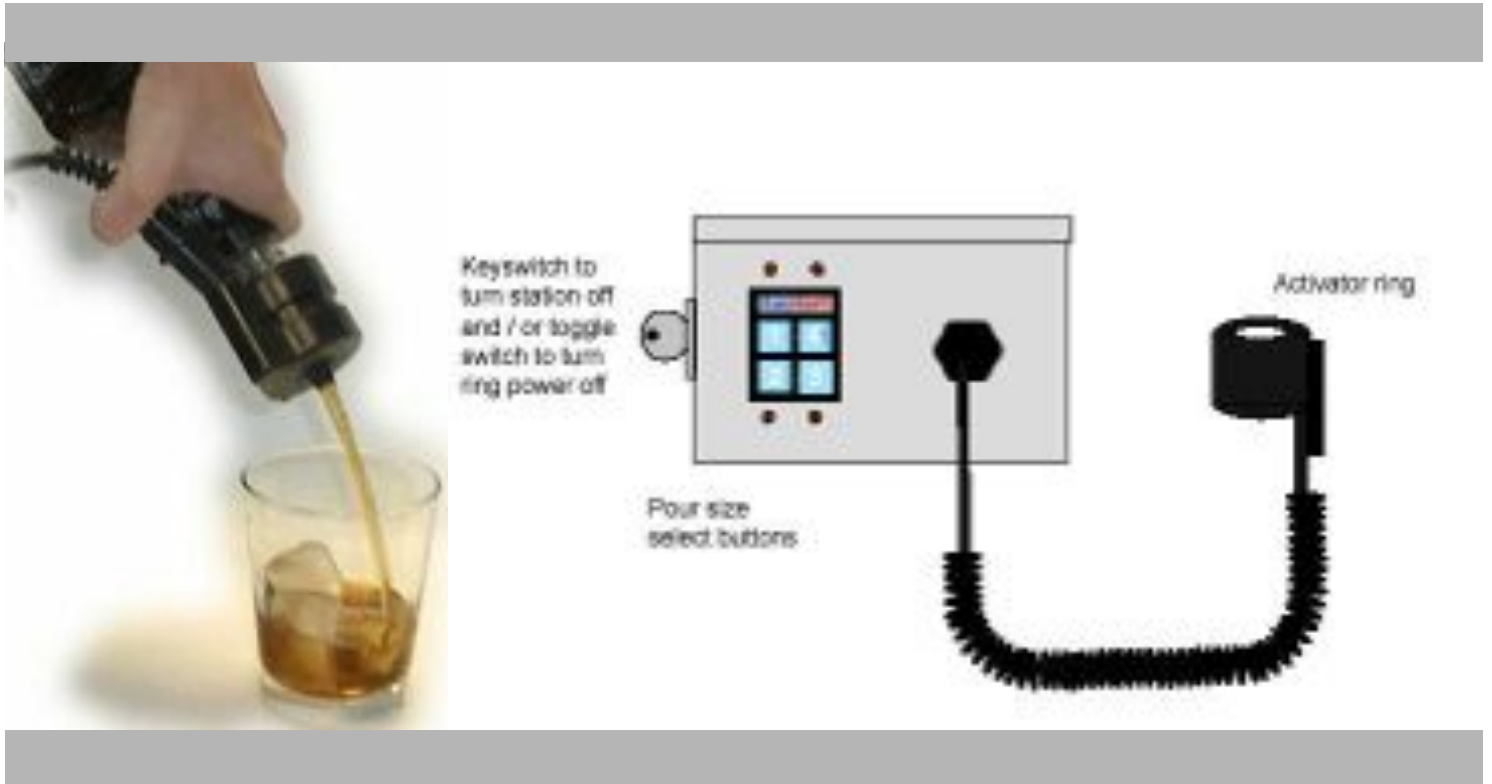


HOW TO SERVE A PRODUCT WITH EASYTRACK-7

Select the desired portion using the pour select buttons.

Place the bottle in the activator ring and invert bottle to pour. The activator will automatically pour only the amount programmed.

Replace activator in yoke. Pour size will automatically reset to pour size one.



COMPLETE CONTROL FOR YOUR BAR IN ONE SIMPLE, COMPREHENSIVE PACKAGE

EQUIPMENT DESCRIPTION & FUNCTION:

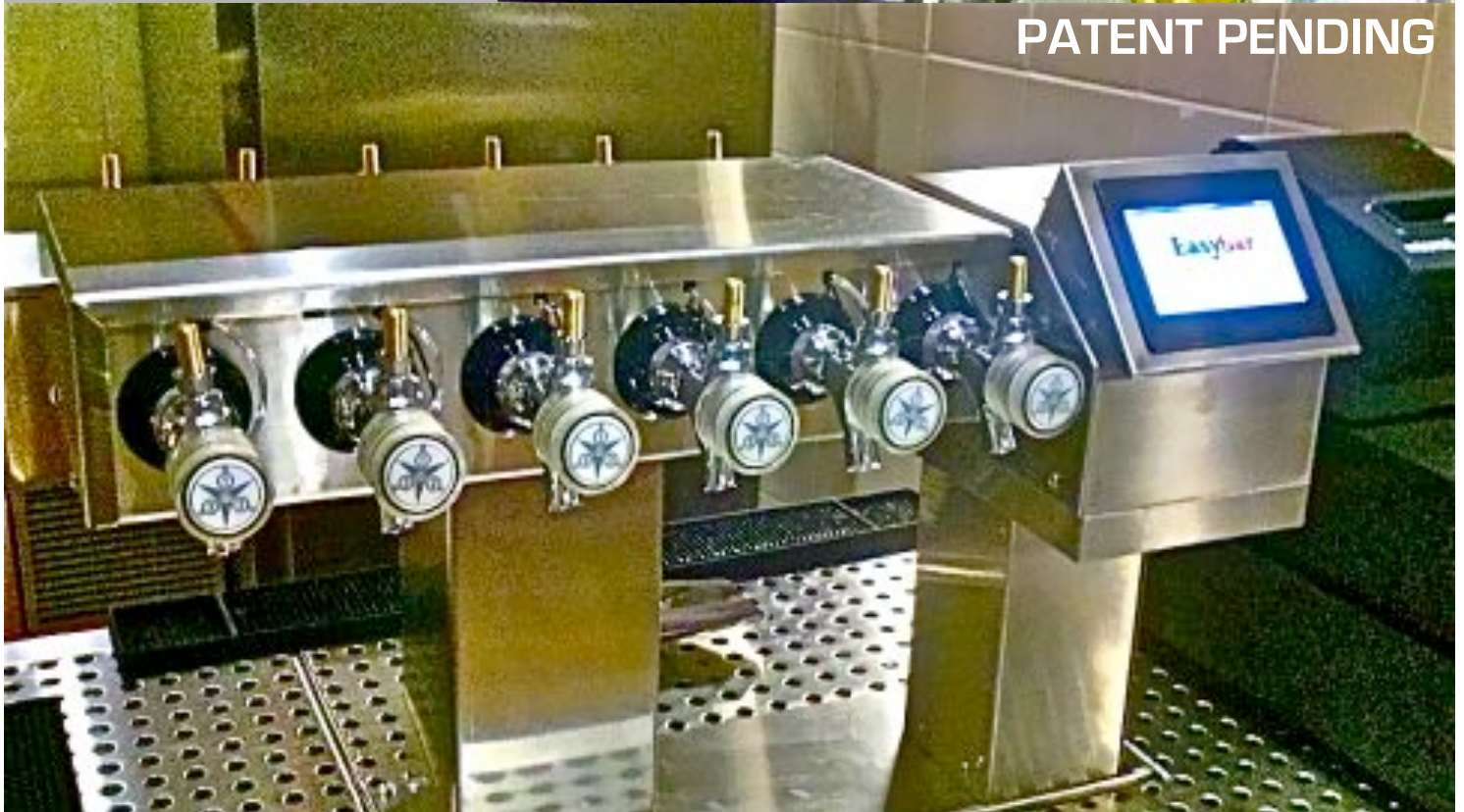
Each Easytrack-7 station consists of a control box with an activator ring and yoke to hang the ring while not in use. Easytrack-7 stations can be equipped with a station on / off key switch, a power on/off toggle switch, or both. The pour select switch designates what amount will be poured.

When used in conjunction with Easybar CLCS electronics, Easytrack-7 can be programmed & calibrated by computer. Detailed pouring information is collected and can be organized into informative reports using Easybar software. CLCS electronics can also be configured to ring up on a compatible POS system.

EASYBAR SELF SERVICE COCKTAIL STATION



PATENT PENDING



QUALITY, ACCOUNTABILITY, AND CONTROL

Easybar Cocktail Service Station eliminates the guesswork and the wait, making it easy for any server to mix a drink without a bartender present.

CAPACITY - Easybar cocktail towers can dispense up to 48 liquors plus any combination of 12 juices or sodas.

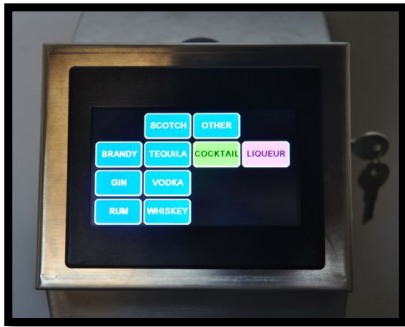
SIMPLICITY - Can pour a single shot or cocktails of up to five ingredients - including liquor, juice, soda and mixers - dispense at the touch of a button.

SPEED - Ingredients dispense simultaneously to cut pour time.

ACCURACY - All ingredients dispense in accurate portions ensuring perfect cocktails & mixtures every time.

HOW IT WORKS

1. SIGN INTO THE POS TO UNLOCK THE COCKTAIL STATION.



2. CHOOSE THE COCKTAIL FUNCTION FROM THE MAIN SCREEN (SHOT, MIXER, COCKTAIL).



3. CHOOSE A LETTER OF THE ALPHABET THAT COINCIDES WITH THE COCKTAIL YOU WOULD LIKE TO POUR.



4. ALL OF THE COCKTAILS STARTING WITH THE CHOSEN LETTER WILL APPEAR. PRESS THE COCKTAIL YOU DESIRE AND THE UNIT WILL POUR THAT COCKTAIL WHILE AUTOMATICALLY REGISTERING THE POUR TO THE POS TERMINAL.

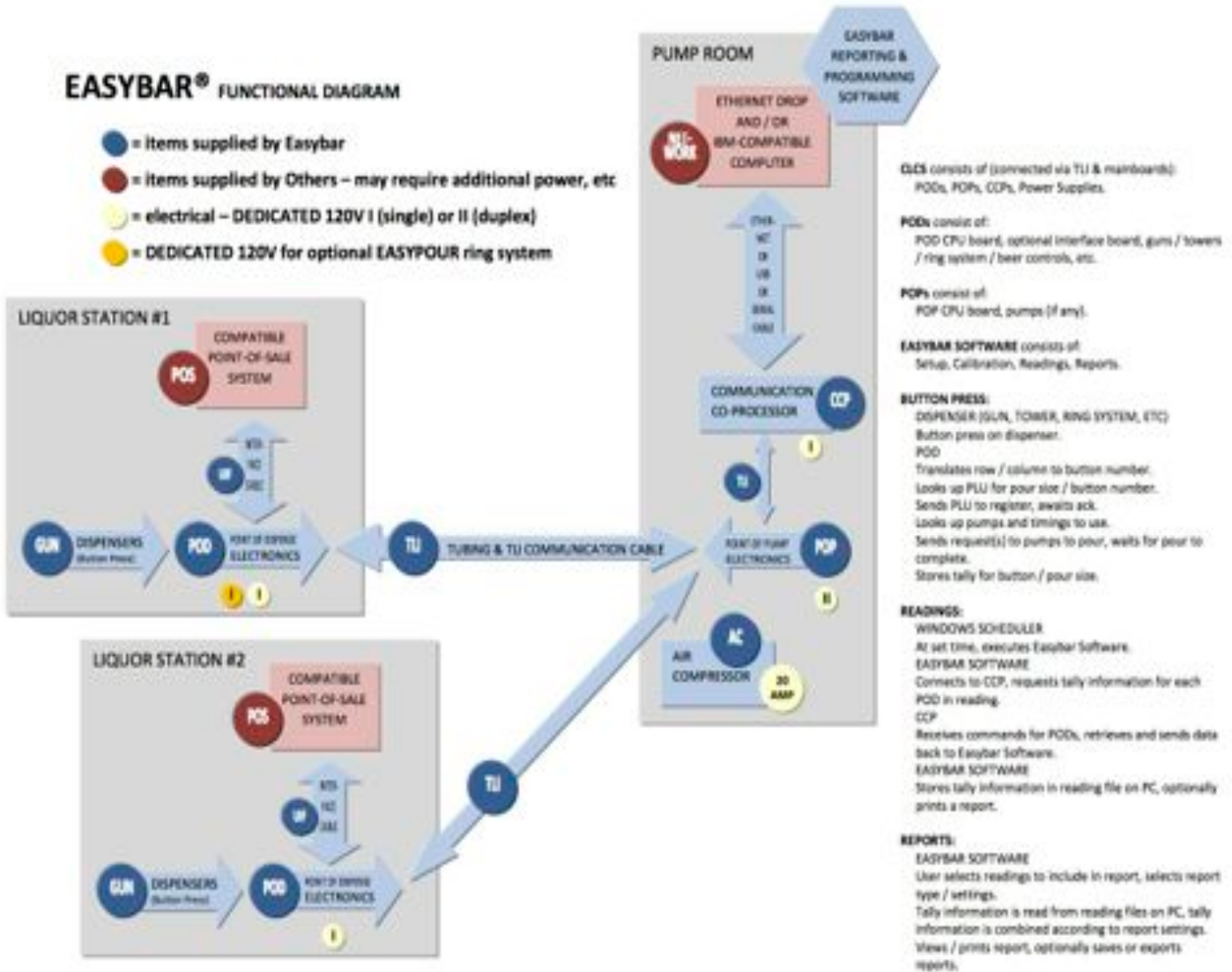
5. FINISH YOUR TRANSACTION ON THE POS TERMINAL. THE UNIT WILL LOCK UNTIL THE NEXT SERVER SIGNS IN.



POINT OF SALE INTERFACING CONTROL+ACCOUNTABILITY=PROFIT

EASYBAR® FUNCTIONAL DIAGRAM

- = items supplied by Easybar
- = items supplied by Others – may require additional power, etc
- = electrical – DEDICATED 120V I (single) or II (duplex)
- = DEDICATED 120V for optional EASYPOUR ring system



SYSTEMS WE INTERFACE WITH:

POSITOUCH
ROMANCO
SAMSUNG 650, 6500, SPS200
SOFT-TOUCH (REVERSE INTERFACE)
SYCO
SYSTEM 3
TEC AMERICQA FS3600
TOUCHSCREEN

ALOHA
COMTREX
DIGITAL DINING
FUTURE POS
INFOGENESIS
MAITRE D' (REVERSE INTERFACE)
MENUSOFT
MICROS 3700, 8700 & 9700
PIXELPOINT

EASYBAR LIQUOR SOFTWARE

STATION CONFIGURATION - All dispensers can be configured with a single program. Setup information (including individual brands, cocktails, pour sizes, and PLU numbers) can be input manually or using the auto fill function. Once complete, all setup information can quickly be copied to other stations.

AUTOMATIC READINGS - Readings can be scheduled for any time of the day, date, or week. Combine any number of readings for comprehensive consolidated reports or select individual readings to detail information by shift or dispenser type.

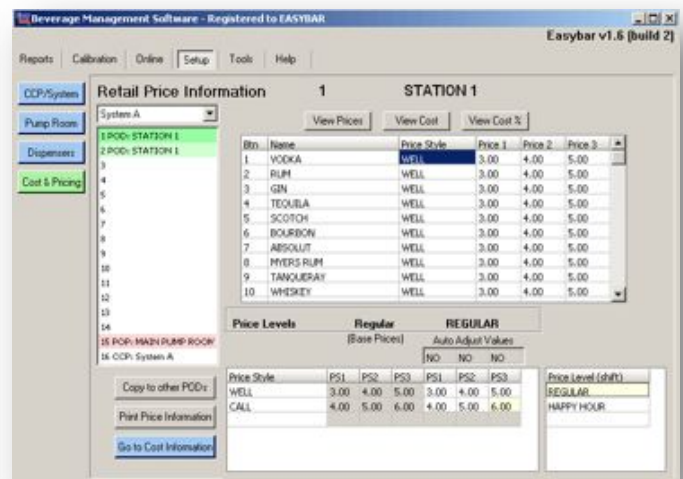
CALIBRATION - No need to calculate or fight to adjust your pour sizes! Simply enter the amounts poured by your system and Easybar® Beverage Management Software will automatically adjust all pour sizes and cocktails.

REMOTE CONTROL - Reports can be taken or viewed remotely with a modem & remote access software. Likewise, stations or systems can be enabled or disabled from the computer giving management complete control over dispensing even when not on property. Remote access also allows Easybar technicians to dial in to look at or adjust your system without an on-site service call.

COMPREHENSIVE REPORTS - Customized reports show dispensing activity and cost / retail analysis. Information can be broken down by brand, drink & station or can be combined to show grand totals by station or system. Usage reports help track inventory.

COMPUTER REQUIREMENTS -

System running Windows 95*, Windows 98, Windows NT4*, Windows ME, Windows 2000, Windows XP, or higher, serial communication port or USB-to-Serial adapter, CD-ROM, and 256 color video card required.



FREQUENTLY ASKED QUESTIONS

HOW FAST IS THE SYSTEM?

The Easybar gun system is capable of pouring 28 one-ounce drinks per minute! This includes cocktails, long pours, and regular pours. Not only are you saving time at the bar, the system also automatically inventories your liquor costs. By optimizing the speed at which you put a drink into the customer's hand, you increase your potential for multiple orders by a single patron.

WHAT IS THE DIFFERENCE BETWEEN POURING A DRINK WITH AND WITHOUT THE EASYBAR LIQUOR GUN SYSTEM?

EXAMPLE of Easybar cocktail pour: Long Island Ice Tea:

Bartender Easybar pour:

1. Picks up glass and adds ice
2. Picks up liquor gun and presses Long Island Ice Tea button
3. All liquors are poured in exact amounts at the same time
4. Serve

Bartender free pour from bottle:

1. Picks up glass and adds ice
2. Picks up Rum bottle pours portion into glass. Replaces bottle
3. Picks up Vodka bottle pours portion into glass. Replaces bottle
4. Picks up Tequila bottle pours portion into glass. Replaces bottle
5. Picks up Triple Sec bottle pours portion into glass. Replaces bottle
6. Picks up Gin bottle pours portion into glass. Replaces bottle
7. Mixes drink with straw and serves

FACTS:

- Easybar is faster
- Easybar eliminates bartenders' temptation to over pour
- Easybar pours a perfect portion every time
- Easybar provides instant brand and inventory accountability

MY CUSTOMERS WANT DRINKS POURED FROM THE BOTTLE! WHY WOULD I WANT A LIQUOR GUN?

Do all of your customers order from the bar?

Studies show that 80% of customers who patron bar/restaurants do not sit at the bar.

When you get down to it, customers are concerned with four things when it comes to a drink:

1. Quality
2. Quantity
3. Price
4. Presentation in the glass

These things are all up to the establishment and have nothing to do with the actual pouring of the drink. The system only ensures that every drink is poured perfectly, every time. This is something a bartender is unable to do. The only customers who complain are those who are accustomed to getting something for nothing. It is simply a matter of quality control.

WHAT WILL THE EASYBAR SYSTEM DO FOR ME IF I DECIDE TO CONTROL ONLY MY HIGHEST VOLUME LIQUORS?

The objective of the Easybar liquor system is to control the highest number of liquors with the lowest possible equipment cost to the owner. Studies have shown that in a typical bar/restaurants:

- 6-8 brands represent approximately 60%-65% of total volume
- 9-12 brands represent approximately 66%-80% of total volume
- 13-16 brands represent approximately 81%-88% of total volume
- 17-24 brands represent approximately 89%-95% of total volume

ISN'T THIS TYPE OF SYSTEM EXPENSIVE?

Easybar offers systems for all bar venues. Our systems provide maximum return on investment, improving pour costs regardless of venue type or size. Systems typically pay for themselves within a matter of months and once the system is paid for you will continue to receive the benefits of the system for years to come. Its not a question of how much the system costs, it's a question of when to get started!

YOU CAN AFFORD A BEVERAGE CONTROL SYSTEM... SIMPLY BECAUSE IT PAYS FOR ITSELF
 EVERY TIME YOU LOSE AN OUNCE OF LIQUOR, YOU LOSE THE COST OF THE PRODUCT AND THE REVENUE OF THE DRINK THAT SHOULD HAVE BEEN SOLD. IF YOUR BARTENDERS OVER POUR BY 1/8 OUNCE PER DRINK, YOU COULD BE LOSING THOUSANDS OF DOLLARS PER YEAR. SEE THE ESTIMATES BELOW...

NUMBER of cases used per week (12 one liter bottles per case)	4	5	10	18
Price per drink containing 1 oz liquor	\$4.00	\$4.00	\$4.00	\$4.00
If each drink is over poured by only 1/8 oz your loss is...	\$37,511.00	\$46,888.75	\$93,777.49	\$168,799.49
If five drinks per case are given away you additional loss is...	\$4,160.00	\$5,200.00	\$10,400.00	\$18,720.00



THE AREA ABOVE THE RED LINE ON THE WHITE GLASS REPRESENTS ONLY 1/8 OUNCE OF LIQUOR.

CONTROL YOUR PRODUCT AND INCREASE YOUR PROFIT. HOW EASYBAR CAN HELP

- STANDARDIZE YOUR PORTIONS - DRINK SIZES ARE ACCURATE TO 1/32 OF AN OUNCE
- ENSURE DRINKS ARE ACCOUNTED FOR - USING EASYBAR MANAGEMENT SOFTWARE
- GUARANTEE DRINKS ARE RUNG UP - POINT-OF-SALE INTERFACING AUTOMATICALLY RINGS THE REGISTER AS DRINK IS DISPENSED

IS THE EASYBAR LIQUOR SYSTEM NSF CERTIFIED?

Yes, Easybar CLCSII-T Liquor Systems are certified by NSF International.



Considering the Competition?

➔ **CONSIDER THIS FIRST**

Easybar® is the most accurate

Our competitors' demand pumps work by compressed air pushing the product through the system. If a pump is fired at more than one station – or a button at the same station is pressed more than once – before pressure has time to build back up in the pumps, the portions dispensed will vary greatly. In the event of a broken tube or stuck valve, demand pumps – being under constant pressure – will empty the entire backup of the system.

➔ **Easybar's** positive displacement pumps are operated by an electronic switch which opens and closes for every portion allowing the pump to completely reset before a second drink is dispensed. Because pressure is put on our pumps only when dispensing, a broken line or stuck valve will only allow what product is in the lines to be lost and will not affect your product reserve.

Easybar® is the most flexible

Other liquor systems are capable of dispensing between 16 and 48 brands. Some systems require all brands to be calibrated to the same pour times which causes thick brands like Kahlua to pour in smaller portions.

➔ **Easybar** can dispense up to 128 liquids. Dispensing guns and / or towers can be used in any combination to meet customer need. Controls for beer, wine, soda and juice can be easily integrated into any Easybar CLCS system. Each liquid can be programmed individually so that an ounce is an ounce no matter what the product viscosity. Each button can be programmed to pour in three individually programmed sizes. Cocktails containing up to five products – each with it's own individually programmed pour size – can be programmed to dispense at the touch of a button. Our exclusive BARFLY software makes calibrating a snap. Simply measure a single portion of any liquid, enter that portion into your software and Barfly will automatically adjust the pour size of that liquid everywhere that it occurs in the system – including cocktails. Positive displacement pumps and double-wall tubing ensure product consistency within 1/16 of an ounce even over long distances or uphill.

Easybar® ensures product quality

Our competitors use CO2 or compressed air to push liquor through a chamber to the dispenser. When this air meets the liquor, taste and product integrity are compromised. Any mildew or contaminant present in the environment, CO2 tank or air compressor is able to mix with your beverage product. When CO2 is used to pressurize the system, your liquor or juice can even become carbonated!

➔ **Easybar** uses unique positive-displacement pumps – not air – to move the product. Air never touches the liquor. Only pure product dispenses into your customer's glass.

Easybar® is the most informative

Many competitive systems are fully self-contained. Simple reports are gathered and sent to a stand-alone printer or electronics unit only.

➔ The **Easybar** system can tie completely into your IBM compatible computer. Data can be collected from the Easybar system on demand or automatically according to customer needs. Once the data is collected, Barfly can organize it by station, by shift, by day, month, week or year – or any time period required. Easybar data can also be exported to an ASCII file which can then be opened and manipulated in many standard accounting and spreadsheet programs. As Easybar systems are controlled and monitored by computer, many functions (such as programming, calibrating and taking reports) can be accomplished via modem from anywhere in the world. On-line technical assistance is also available from Easybar's factory. The Easybar system can also operate on its own and continues to dispense and collect reporting data even in the event of a computer failure.

EASYBAR CLIENTS (PARTIAL LISTING)

Ameristar Casino - St Charles, MO
Atlantis Casino Resort - Paradise Island, Bahamas
Bally's Resort Hotel & Casino - Las Vegas, NV
Bally's Wild Wild West Casino - Atlantic City, NJ
Barbary Coast Hotel & Casino - Las Vegas, NV
Beau Rivage Hotel & Casino - Biloxi, MS
Bellagio Hotel & Casino - Las Vegas, NV
Bogey's Private Club - Clearfield, UT
Boomtown Casino - Biloxi, MS
Borgata Hotel Casino & Spa - Atlantic City, NJ
Caesar's - Atlantic City, NJ
Caesar's Indiana Riverboat Casino - Elizabeth, IN
Cannery Casino & Hotel - Las Vegas, NV
Casino Caribbean - Yakima, WA
Celebrity Theatre - Phoenix, AZ
Charles Town Races - Charles Town, WV
Chinook Winds Casino - Lincoln City, OR
Chuk-Chansi Gold Resort - Coarsegold, CA
Mohegan Sun Casino - Uncasville, CT
Mountain High Casino - Black Hawk, CO
New York, New York Casino - Las Vegas, NV
Orleans Hotel & Casino - Las Vegas, NV
Pahrump Station - Pahrump, NV
Pala Casino - Pala, CA
Palace Casino - La Center, WA
Paris Las Vegas - Las Vegas, NV
Park Hotels - New Delhi & Calcutta, India
PJ Pockets Casino - Federal Way, WA
Plaza Casino - Las Vegas, NV
Resorts Hotel & Casino - Atlantic City, NJ
Sands Hotel & Casino - Atlantic City, NJ
Seminole Casino - Immokalee, FL
Showboat Casino - Atlantic City, NJ
South Coast Hotel & Casino - Las Vegas, NV
Spirit Mountain Casino - Grand Ronde, OR
Stratosphere Casino - Las Vegas, NV
Suncoast Hotel & Casino - Las Vegas, NV
Tavern on the Green - New York, NY
Treasure Island Casino - Las Vegas, NV
Trump Castle - Atlantic City, NJ
Trump Plaza - Atlantic City, NJ
Trump Taj Mahal - Atlantic City, NJ
Valley View Casino - Valley View, CA
Venetian Resort, Hotel & Casino - Las Vegas, NV
Wynn Las Vegas - Las Vegas, NV
Planet Hollywood Resort - Las Vegas, NV
Clearwater Casino - Suquamish, WA
Colorado Central Station - Black Hawk, CO
Cypress Bayou Casino - Charenton, LA
Dakota Magic - Hankinson, ND
Excalibur Hotel Casino - Las Vegas, NV
Fitzgerald's Casino - Las Vegas, NV
Golden Nugget - Laughlin, NV
Hard Rock Hotel & Casino - Hollywood, FL
Hard Rock Hotel & Casino - Tampa, FL
Harrah's Atlantic City - Atlantic City, NJ
Harrah's Chester - Chester, PA
Harrah's Council Bluffs - Council Bluffs, IA
Harrah's East Chicago - East Chicago, IN
Harrah's Lake Tahoe - Stateline, NV
Harrah's Las Vegas - Las Vegas, NV
Harrah's Laughlin - Laughlin, NV
Harrah's Metropolis - Metropolis, IL
Harrah's North Kansas City - North Kansas City, MO
Harrah's Reno - Reno, NV
Harrah's Rincon - Valley Center, CA
Harrah's St Louis - Maryland Heights, MO
Harvey's Lake Tahoe - Stateline, NV
Hofbrauhaus - Las Vegas, NV
Hollywood Casino - Bay St Louis, MS
Isle of Capri Biloxi - Biloxi, MS
Isle of Capri Black Hawk - Black Hawk, CO
Isle of Capri Lula - Lula, MS
Million Dollar Elm Casino - Tulsa, OK
Mirage Casino - Las Vegas, NV
Foxwoods Resort Casino - Ledyard Center, CT
Gold Coast Hotel & Casino - Las Vegas, NV
Golden Nugget - Las Vegas, NV

“Easybar has provided excellent service for our resort/casino over the years. The equipment is durable, the cost is economical, and the result of having their system installed has been incredibly profitable. Our liquor investment is protected and we could not be happier with the system.”

*Heidi Hinkle
Director of Beverage
Bellagio Resort*

**CONTROL YOUR PRODUCT
INCREASE YOUR PROFIT**

19799 SW 95TH AVE SUITE A TUALATIN, OR 97062
PH: 503.624.6744 | FAX: 503.624.6741
EMAIL: INFO@EASYBAR.COM



WWW.EASYBAR.COM