

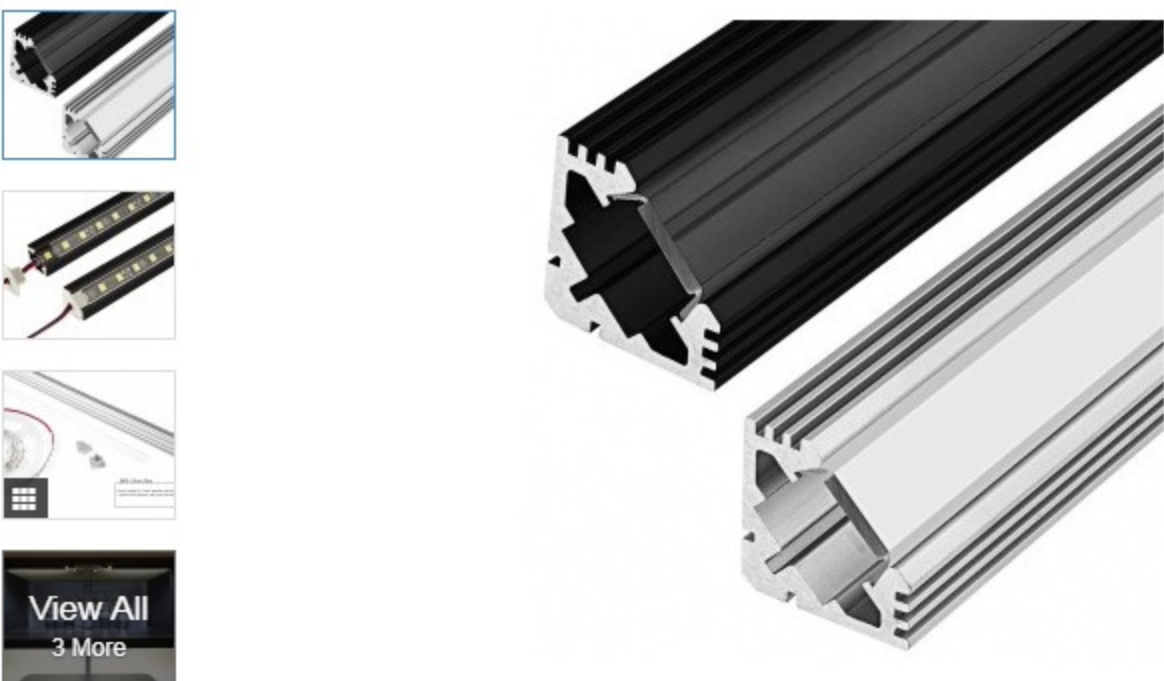
4th of July 15% Off Sale! Use promo code FREEDOM18 during checkout.

Home > Installation & Power Supplies > Cable Management & Mounting Supplies > LED Profile Housings > Search results for: "klus 45-alu"  
> Corner Accent Aluminum Profile Housing for LED Strip Lights - KLUS 45-ALU Series

## Corner Accent Aluminum Profile Housing for LED Strip Lights - KLUS 45-ALU Series

Part Number: B4023

Write a Review Share: Facebook Twitter YouTube Google+ Pinterest



Select Finish:  Black  Silver

Select Length:

Select Lens:  Frosted  Clear  Not Included

In Stock Starting at **\$16.95** ea.

Volume price as low as \$11.87 See All Discount Pricing

Qty 1

Orders ship on or before **Monday 07/02/2018**

Select options to view included items

### Customers Also Viewed



## Overview

The KLUS 45-ALU series LED aluminum profile housing is great for bookshelf lighting, cabinet lighting, under-cabinet lighting, cupboard lighting, workbench lighting, cove lighting, or under desk hatches and stair nosings. This corner accent LED channel provides a professional mounting solution for flexible, rigid, or linear LED strip lights that measure up to 11 mm wide. The 1m (39-3/8") or 2m (78-3/4") profile housing is constructed of black or silver anodized extruded aluminum with a decorative edge. A clear lens is available, or choose a frosted lens for smooth lighting with no visible hot spots. See similar KLUS TAN-C5 Eco Corner Accent Aluminum Profile Housing, SBL Pro Corner Accent Aluminum Profile Housing, or preassembled Corner-Mount Aluminum LED Light Bar Fixture.



### Compatible Products



## Specifications

Print Specifications

Dimensions	View Dimensional Drawings	Material	Aluminum
Mount Type	Corner	Standards And Certifications	RoHS Compliant
Strip Width	11.2mm (0.44in)	Type	Aluminum Housing

All specifications are subject to change without notice.

Image	Part NO	Price
	B4023ANODA-1M	\$16.95
	B4023ANODA-2M	\$33.95
	B4023_K7-1M	\$16.95
	B4023_K7-2M	\$33.95
	B4023ANODA-1M-C	\$25.90
	B4023ANODA-1M-F	\$25.90
	B4023ANODA-2M-C	\$51.90
	B4023ANODA-2M-F	\$51.90
	B4023_K7-1M-C	\$25.90
	B4023_K7-1M-F	\$25.90
	B4023_K7-2M-C	\$51.90
	B4023_K7-2M-F	\$51.90

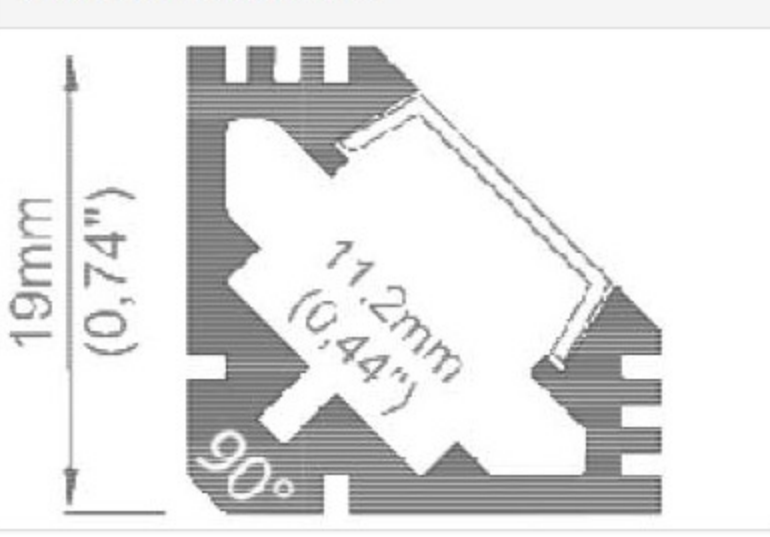
All specifications are subject to change without notice.

## Product Characteristics

The angular extrusion made from high quality aluminum is designed for flexible or rigid LED strips that are 8 - 10mm wide. A variety of housing covers are available for the extrusion. The cover-K is available in a frosted or transparent lens type. There is also the cover-S focusing lens which allows for a 10 degree light pattern output. Covers are made of polycarbonate. Standard polypropylene end caps and mounting brackets (in steel, zinc or chrome finish) are used for the extrusion as supplementary accessories. End caps protect the extrusion from dust and other undesirable elements, which can make LED strips dirty and reduce their light output. The extrusion can be mounted to surfaces with the use of double sided adhesive tape or mounting brackets. The mounting bracket guarantees easy and secure mounting of the extrusion to a desired surface. It can also work as connector between two extrusions.

Integrated, straight line of light can be achieved by assembling: the extrusion, frosted HS cover and densely spaced LEDs.

### Product Dimensions



## Applications

The extrusion with the LED light source is mostly used as interior lighting, especially to light cabinets, stairs, glass cases, or as a decoration light for a niche in drywall ceilings.

## Advantages

Small dimensions, IP65 waterproof level can be reached, lightweight, modern design, environment friendly. Profile designed to be inserted into all types of grooves, inputs or to be mounted to different surface edges. The light is directed at a 45 degree angle so that it does not hurt the potential user's eyes. Can be applied to furniture, exhibitors etc.

### Documentation

Download B4023 Data Sheet

## Accessories

### Most Popular

- Installation Supplies
- End Caps
- LED Strips
- Lenses
- Remotes/Switches
- All Accessories

### Accessories Links

Installation Supplies

1. **KLUS** 00030 - 45-ALU series LED Profile End Cap  
Product Code: 00030  
In Stock  
Profile end cap for the 45-ALU series housings. Flush with edge of LED housing and has a no hole design, for ending a series with no wires. Compatible with MICRO SWITCH(1576).  
 \$1.95 ea.

2. **KLUS** 00031 - 45-ALU series LED Profile End Cap with Wire Hole  
Product Code: 00031  
In Stock  
Profile corner mount end cap for 45-ALU series housing. End caps are flush with edge of LED profile and have a hole for wiring inserts. Compatible with MICRO SWITCH(1576).  
 \$1.95 ea.

## Reviews

### Overall Rating



### Total Reviews

1

### Rating Breakdown

100% (1 Review)  
0%   
0%   
0%   
0%

### Tell Us What You Think

Share your own experience and photos of this product. Doing so will help inform other potential buyers and allow us improve our product lines. It may take up to 72 hours for your review to appear.

Sort By: Most Helpful | Reviews: 5/Page | Page: 1 | Previous | Next

★★★★★  
Name: DAVID  
Technical Level: Average  
Part Number: B4023ANODA-1M  
Reviewed On: 06/07/14

**will not allow**  
just a heads up, the NFLS8-2CPH 8mm Flexible Light Strip Solderless Clamp On Pigtail Adapter will not fit inside this - CONTACT SuperBrightLEDs.com to coordinate. LOVE this mount!!!!

**superbrightleds.com Staff Response**  
Thank you for taking the time to send us a review. Customer feedback is very important to us. Sorry that fitment issue with the connectors. I have contacted our IT team about including a note on the connectors stating that they are not for use with the housings and that all connections need to be soldered.

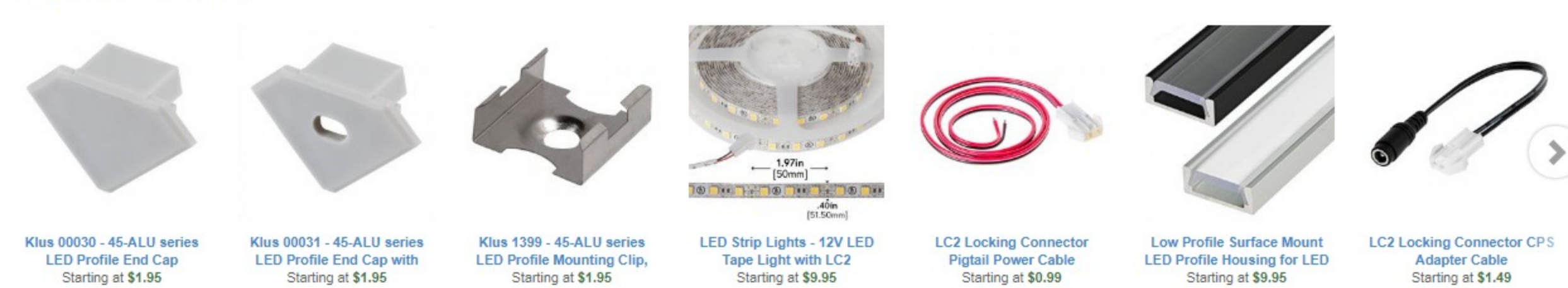
Was this review helpful?  3  0

Sort By: Most Helpful | Reviews: 5/Page | Page: 1 | Previous | Next

## Related Products



## Customers Also Purchased



## Recently Viewed



## Related Links



Since its founding in 2002, Super Bright LEDs has been committed to providing customers with outstanding service, expertise, and the highest quality products in LED lighting. Read More >

Subscribe to our mailer: Enter email address...

Facebook Twitter YouTube Blog Google+ Pinterest Houzz Instagram

**Customer Service**  
Order Status  
Shipping  
Returns & Exchanges  
Custom LED Designs  
Technical Support  
Warranty  
Wholesale/Discounts  
Payment/Orders  
Purchase Orders

**Tools & Resources**  
LED Lighting Business Solutions  
LED Lighting Rebate Finder  
Vehicle LED Bulb Finder  
Universal LED Bulb Finder  
LED Application Photo Gallery  
Power Supply Calculator  
Energy Savings Calculator  
New & Featured Products  
Closeout/Clearance  
Share Your Photos

**Company Info**  
About  
Contact Us  
Careers  
Blog  
Contact  
866-590-3533  
Email  
Chat (offline)