



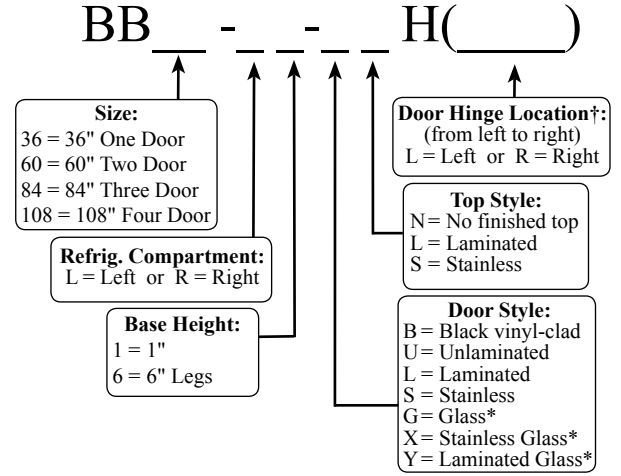
BB60-L1-XSH(LR)



NSF standard 7 listed for open food storage

| | |
|--------------------------|------------|
| Project: _____ | AIA# _____ |
| Item #: _____ Qty: _____ | SIS# _____ |
| Model #: _____ | |

Back Bar Coolers
One, Two, Three and Four Door
Self-Contained



*BB108 with glass doors is not NSF listed for open food storage
 † Specify hinge location for each door

Standard Features

- Self-contained
- All stainless steel interior construction with radius interior corners for easy cleaning
- CFC free foamed-in-place insulation
- Galvanized steel sub-top
- Black vinyl-clad steel exterior front and sides
- Automatic defrost timer
- Stainless steel die cast handle
- Automatic condensate evaporator
- Leg sockets recessed into base
- 1/2" thick ABS plastic threshold scuff plate
- 180° swinging doors
- Six foot grounded cord and plug (exits at rear)
- Compressor compartment available on left or right side of unit

Specifications

- Electrical**
- 120V, 1 phase, 60 Hz
 - Dedicated 15 amp circuit is required
 - Includes a 6 foot grounded cord and plug which exits the back of refrigeration compartment
- Refrigeration**
- R134a (BB36 & BB60)
 - R404a (BB84 & BB108)
- Operating Range**
- 34° F to 40° F
- Plumbing**
- Automatic condensate evaporator. No drain connection required
- Shelving**
- Two adjustable coated shelves and one bottom coated rack per door included
- Legs**
- 1-5/8" diameter
 - Stainless steel bullet feet

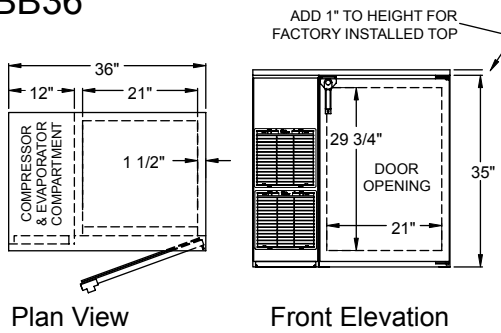
- Materials**
- 22 gauge stainless steel parts include: interior floor, walls, ceiling, front of cabinet, and evaporator housing
 - 22 gauge black vinyl-clad parts include: sides, standard doors, and compressor compartment housing
 - 22 gauge galvanized steel parts include: exterior sub-top and back
 - 16 gauge stainless steel parts include: legs
 - 16 gauge galvanized steel parts include: base and compressor compartment base plate
 - 16 gauge zinc plated CR steel parts include: leg sockets
 - 12 gauge stainless steel parts include: hinges, hinge brackets, and lock brackets

| | |
|--|------------------------|
| <p>Glastender, Inc. • 5400 N Michigan Rd • Saginaw, MI • 48604-9780 989.752.4275 • 800.748.0423 • Fax 989.752.4444 www.glastender.com</p> | <p>Approval/Notes:</p> |
|--|------------------------|

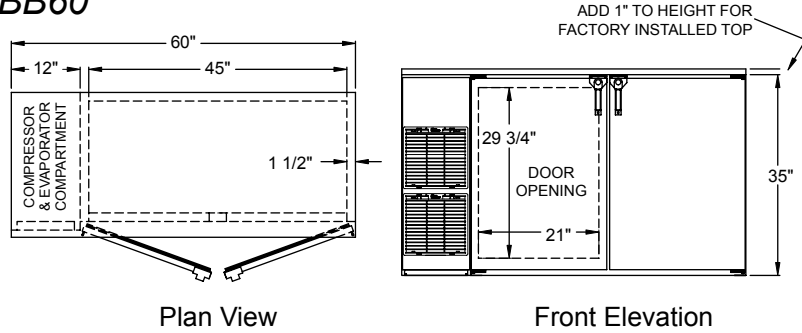
Self-Contained Back Bar Coolers

Dimensional Information

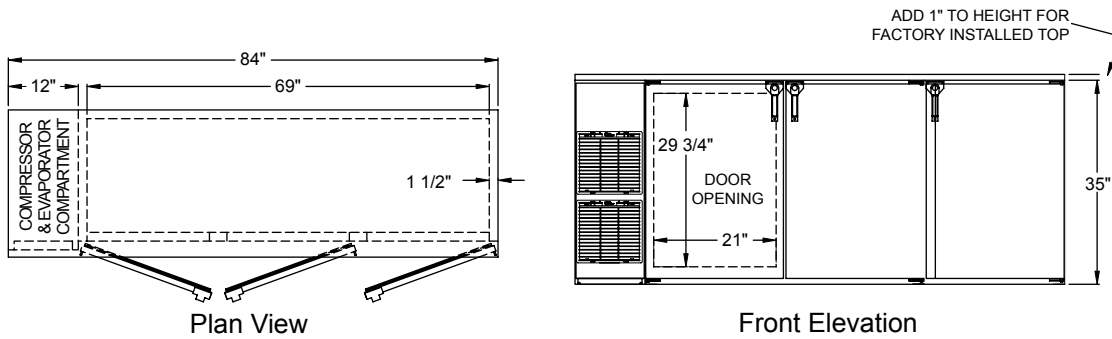
BB36



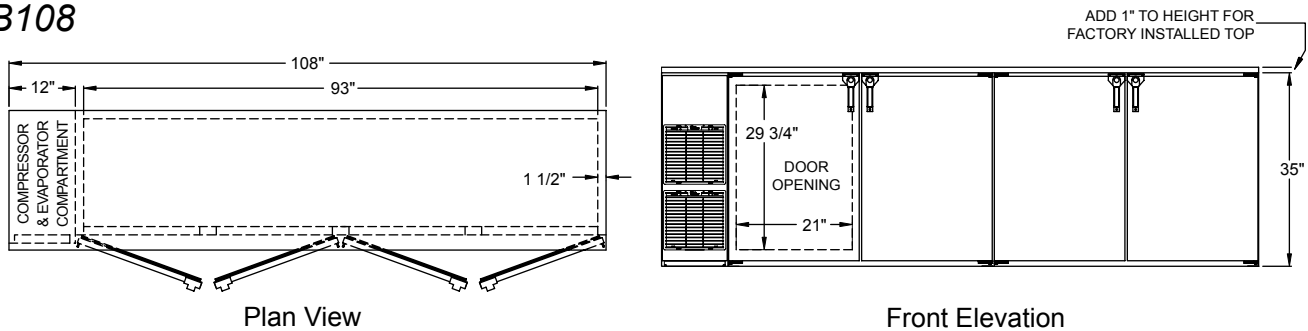
BB60



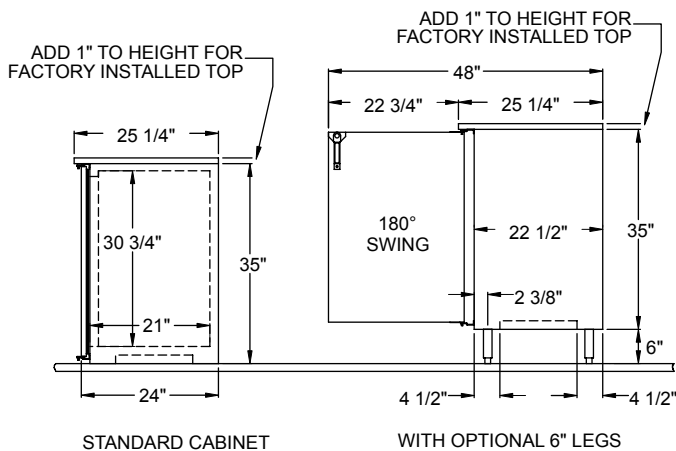
BB84



BB108



Side View All Models



Note: Available with compressor left or right. Compressor left model shown. Use Model Number Key to specify location when ordering.

| Model | Capacity: 12 oz. bottle / 1/2 barrels | Refrigeration | Voltage | Amps |
|-------|---|------------------|------------------------------|-------------------|
| BB36 | 7 cases / 1 half barrel | 1/6 H.P. / R134a | 120v / 60 Hz / 1 phase | 7.2 full load |
| BB60 | 14 cases / 2 half barrel | 1/3 H.P. / R134a | 120v / 60 Hz / 1 phase | 7.2 full load |
| BB84 | 21.9 cases / 4 half barrels | 1/3 H.P. / R404a | 120v / 60 Hz / 1 phase | 10.1 full load |
| BB108 | 29.8 cases / 5 half barrels | 1/3 H.P. / R404a | 120v / 60 Hz / 1 phase | 10.1 full load |